

# CIFA NEW YEAR PARTY

January 12. 2019 (Sat), 2-4pm  
(Open 1:30pm )

Chofu Cultural Center Tazukuri, Murasaki Hall

Admission Fee: **800 yen** (Free for preschool children)

Beer ticket: 200 yen (Max 2 cans per person)

Application and beer tickets can be available **only in advance**  
at CIFA office (Tazukuri, 9th floor) from December 1st to 28th.

Applicants : 150 (first come, first served)

## Drinks & Nibbles



## Cultural Dances

## Lucky Draw



## Olympic Dance

And many more...

**Let's celebrate 2019  
across cultures!**

cifa

調布市国際交流協会  
Chofu International Friendship Association

042-441-6195

Tue, Fri, Sat: 8:30 ~ 17:00

Mon, Wed, Thu: 8:30~20:30

Closed on Sundays, National holidays, Dec 17, 18, 29th~Jan 3rd

cifa@jcom.home.ne.jp

# CIFA NEW YEAR PARTY

January 12. 2019 (Sat), 2-4pm  
(Open 1:30pm )

Chofu Cultural Center Tazukuri, Murasaki Hall

Admission Fee: **800 yen** (Free for preschool children)

Beer ticket: 200 yen (Max 2 cans per person)

Application and beer tickets can be available **only in advance**  
at CIFA office (Tazukuri, 9th floor) from December 1st to 28th.

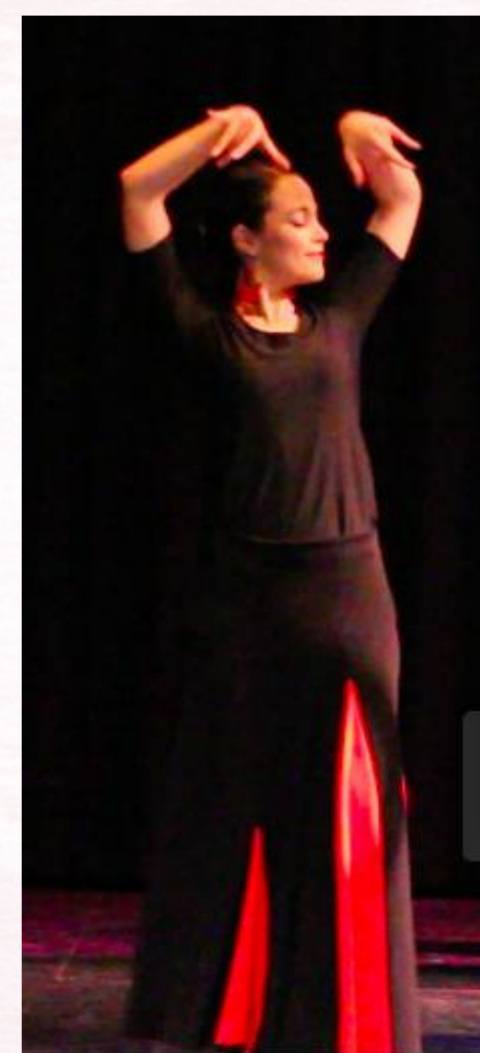
Applicants : 150 (first come, first served)



Drinks & Nibbles  
Cultural Dances  
Lucky Draw  
Olympic Dance

And many more...

**Let's celebrate 2019  
across cultures!**



cifa

調布市国際交流協会  
Chofu International Friendship Association

042-441-6195

Tue, Fri, Sat: 8:30 ~ 17:00

Mon, Wed, Thu: 8:30~20:30

Closed on Sundays, National holidays, Dec 17, 18, 29th~Jan 3rd

cifa@jcom.home.ne.jp